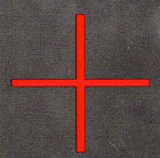


# BOSTON COMMON

56  
GIFTS FOR THE  
HOLIDAYS



SOLVING  
THE  
GARDNER  
HEIST

HIS FIGHT TO THE TOP

MARK  
WAHLBERG

Nancy Corzine table; Panache mirror from The Martin Group; oval-back chairs by John Rosselli

# UNWINDING IN WELLESLEY

A contemporary addition becomes a sumptuous refuge.

By Caroline Cunningham Photographs by Michael J. Lee Photography



Designer Mollie Johnson sitting on an M-Geough upholstered chair from A. Rudin; Vernay side table from Dessin Fournir; FDO crystal lamp

**T**HE BEAUTIFUL, busy mother of three had a clear plan for her 1930s house in Wellesley. She wasn't interested in a large and showy addition that would feel disconnected, in both style and proportion, from the more traditional rooms in her home. She didn't want an elaborate kitchen that would just be admired, as opposed to actually used. Instead, she envisioned light-filled rooms where her children could play; a kitchen where she could pursue her passion for cooking; elegant living and dining rooms for entertaining; and a design scheme that integrated new and old spaces into one luxurious whole. In short, she wanted her home to be a serene and joyful refuge. Thanks to Margaret Booz of Smart Architecture and interior designer Mollie Johnson, the result is exactly that, and even more.

A welcoming and gracious tone is established from the first moment one enters the house. The front hall features a slim table in black with gold details ("I love a shot of black," remarks Johnson), flanked by oval-back chairs on each side and a trellage mirror hanging above. It's a classic configuration, but the spare arrangement of the furnishings against a dark floor gives it a modern edge. Johnson selected an exquisite Steven King ivory



Dennis & Leen Chateau chandelier; Pickford dining table from Dessin Fournir; Baker chairs from The Thomas Pheasant Collection with medallion-print fabric from Webster & Company

*There's subtle drama in the crisp, striped curtains and the rich upholstery on the dining room chairs, as if the party is due to start at any moment.*

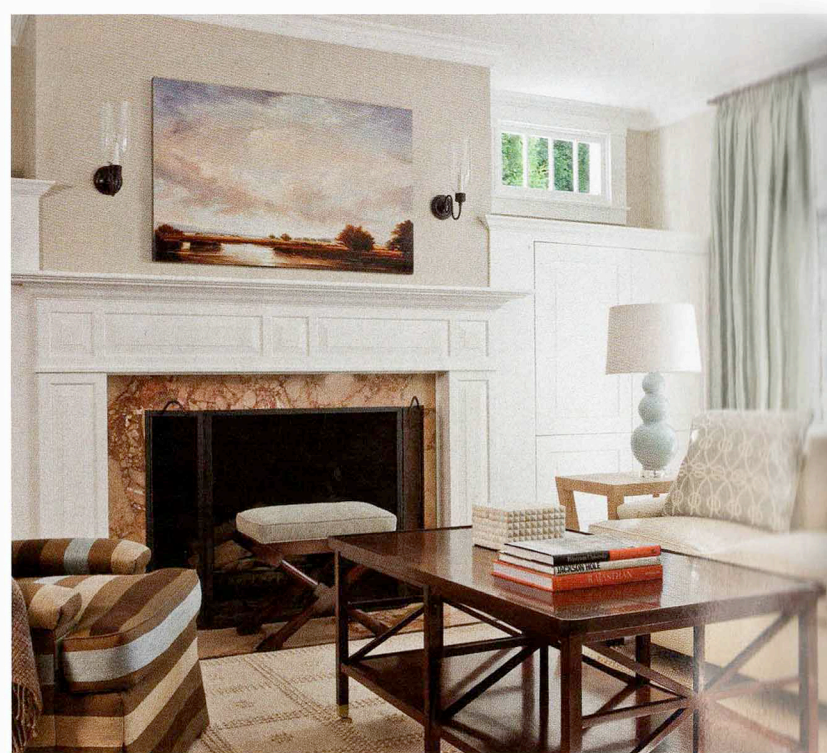


LEFT: Steven King rug; Weitzner linen wall covering; Nancy Corzine curtains in silver silk with Greek key trim from Samuel and Sons; below: Rug from Stark Carpets; Manuel Canovas fabric on the O. Henry House swivel chair and sofa

rug with silk medallions for the living room, and covered graceful furnishings with velvet and silk in silver and pale blue to underscore the quiet opulence of the space. Linen-covered walls and pillows with pleated accents provide texture; striking crystal table lamps flanking a handsome settee add a touch of wit and glamour. Across the hall the dining room, lit from above by an ornate chandelier, sparkles in crimson and silver tones. There's subtle drama in the crisp, striped curtains and the rich upholstery on the dining room chairs, as if the party is due to start at any moment.

*A welcoming and gracious tone is established from the first moment one enters the house.*

In the informal spaces of the house, it's clear that the celebration—of children, family and friendship—is already underway. The kitchen is spacious, light and dazzlingly white, with a Calacatta marble island gleaming beneath a trio of polished nickel pendant lamps. This same marble, in beveled brick, is also used as a backsplash and makes an ideal frame for the custom cabinetry from Olive Square Kitchens. Dennis & Leen bar stools pulled up to the counter



Cowtan & Tout Morgan check upholstery on the sofa; Atlas lantern below; Dennis & Leen bar stools; Calacatta marble island and beveled brick backsplash



provide spots where family or guests can perch and chat with the host, and match the chairs that surround the table in the adjoining breakfast room. A supremely comfortable check sits under a floor-to-ceiling window. The David Iatesta coffee table placed before it practically issues an invitation to kick off your shoes and put up your feet. In the family room, deep swivel club chairs speak to cozy evenings by the fire or in front of the sleek television discreetly placed in a corner.

*In the informal spaces of the house, it's clear that the celebration—of children, family and friendship—is already underway.*

Booz felt it was important to make the kitchen, breakfast room, sitting area and family room architecturally distinctive in the renovation—"One should have different experiences in different rooms," she explains—yet they share an intimate and harmonious feel. It's exactly what the owner wanted, and what we all aspire to achieve in our own homes—spaces that quiet the mind and restore the soul.